



Relief Valve

Application

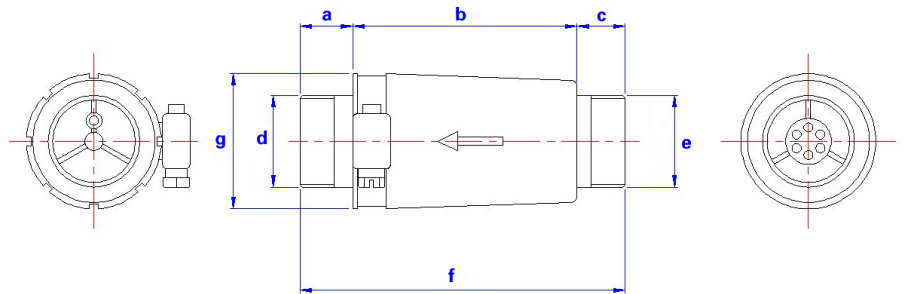
The relief valve is used to adjust the pressure of side channel blower, it is installed on inlet or outlet of side channel blower, in order to protect the blower, the overload pressure will be released from relief valve.

Operating principle

The relief valve is installed on inlet or outlet of side channel blower .

- 1、 when the working pressure or pressure surge inside the blower is overload than the rated pressure of side channel blower , the relief valve will be open within 0.2 minutes , the overload pressure will be released from relief valve in order to protect the blower .
- 2、 when the working pressure reduces to safe value , the valve will be closed slowly, this will not cause the pressure surge again .
- 3、 The materials and specification of relief valve :
 - a、 outside is PVC , inside is steel net .
 - b、 both inside and outside are steel.
 - c、 Can be used both pressure and vacuum .
 - d、 Connect thread suitable for PT,PF and NPT

Dimensions



Selection and ordering data

Model	MPaG	a	b	c	d	e	f	g
RV-01	0-300mbar	23	98	21	1-1/4"G	1-1/4"G	142	Ø59
RV-02	300-600mbar	23	98	21	1-1/4"G	1-1/4"G	142	Ø59

Changes in particular the quoted performance curve, datas and weights without prior notice. The figures are without obligations.

ZHEJIANG GREENCO INDUSTRY CO LTD

TEL :+86-576-86428999 FAX :+86-576-86409555

E-mail:greenco@greenco.cn

http://www.greenco.cn